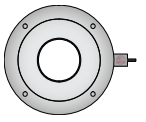






# MSNST ANNULAR LOAD CELLS




Measurement Specialists Inc, dba National Scale Technology, manufactures annular, donut, ring, and thru-hole-style load cells optimized to weigh between 500 and 5,000,000 LBS for both compression and tension applications. On-site electrical engineers and technicians allow for customized bridge, excitation, output, and wiring configurations.




MSNST Drawing #  
**17XXXXX**  
**Annular**




<b>Capacities</b>	500 — 5,000,000 LBS
<b>Temperature Ranges</b>	10°F — 300°F
<b>Nonlinearity Ranges</b>	0.25% — 0.75%
<b>Repeatability Ranges</b>	0.05% — 0.10%


 **Compression** Negative Stress | Material Contraction


 **Tension** Positive Stress | Material Expansion

Specifications reflect annular load cells either currently in stock, or previously engineered and ready-to-assemble, as of August 2022. Accuracy data based on full-scale output readings upon completion of production, which is an average 6–8 weeks period for new load cells. Pricing available for off-the-shelf MSNST #17XXXXX units.

Annular load cells are heavy-duty rings ideal for use in anchoring systems, sling lifts, and tension testing. Thanks to their central aperture, Measurement Specialists’ washer load cells are great for measuring bolt fastening and clamping forces in automotive and construction applications, as well as in rolling mills. MSNST manufactures units interchangeable with most other force measurement brands – consistently reporting higher performance metrics in terms of accuracy and durability.

 **Element | Envelope Metal**  
17-4PH Stainless Steel  
4340 Carbon Steel  
A36 Alloy Steel

 **Cabling Materials**  
Heavy-Duty Polyurethane  
Braided Steel  
Teflon Hose

 **Mounting Hardware**  
Rocker Pins  
Steel Plates  
Tension Adapters

MSNST has been a provider and distributor of weighing solutions across the world for 40 years now, and carries discontinued annular, donut, ring, and through-hole-style load cells customizable to fit any need.



Any facility utilizing weighing equipment should calibrate its scales at least annually for peak performance. This ensures longevity of the load cell(s), keeps your business in compliance with ISO/QMS standards, and saves you money from buying a new device.

160 West Park Loop Northwest, Huntsville, Alabama 35806-1744

Toll-Free: (800) 264-9990  
www.msnst.com

**MEASUREMENT  
SPECIALISTS**  
NATIONAL SCALE TECHNOLOGY

NAICS Codes:  
334513 • 423830 • 541330