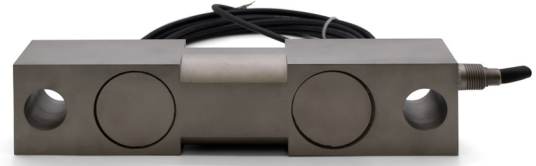




**DOUBLE-ENDED BEAM  
LOAD CELLS**

Optional configurations & features include:

- Capacities of 5K LBF through 1M LBF
- Hermetically-sealed versions available
- Integral cable or connector versions available
- Self-checking
- Custom assemblies and capacities available



**Double-Ended Beam Specifications**

<b>Construction Options</b>	Stainless Steel + Heavy-Duty, 4-Conductor, Shielded Polyurethane Cable High-Strength Alloy Steel + Heavy Duty, 4-Conductor, Shielded Teflon Cable							
<b>Example Capacities</b> <i>U.S. LBF &amp; Metric kN</i>	5K LBF	10K LBF	25K LBF	50K LBF	100K LBF	250K LBF	500K LBF	1M LBF
	22 kN	44 kN	111 kN	222 kN	444 kN	1112 kN	2224 kN	4448 kN
<b>Excitation Voltage</b> <i>AC / DC</i>	10V-15V							
<b>Output Configurations</b> <i>±0.1% volts</i>	3mV / V   0V-10V, 4mA-20mA <i>(customer preference)</i>							
<b>Temperature Range</b> <i>(additional ranges optional)</i>	10°F — 400°F -12°C — 204°C							
<b>Bridge Resistance</b> <i>Input &amp; Output, ±1% ohms</i>	700Ω							
<b>Insulation Resistance</b>	5000 MΩ							
<b>Accuracy &amp; Precision</b>	Linearity: 0.05% FS				Repeatability: 0.03% FS			
<b>Maximum Load</b> <i>% of cap</i>	Safe: 150%				Ultimate: 300%			

Please note that specifications or results may vary as we strive to improve our products.  
Additional information including dimensions and technical drawings available upon request.

*We're called specialists for a reason,*

- Welded construction to withstand harsh environments
- Best accuracies available in the industry
- Customized units available for every need
- Designed & produced in Huntsville Alabama, USA



**National Scale Technology**  
A division of Measurement Specialists Inc.

**160 West Park Loop**  
Huntsville, Alabama 35806

**Your Problems, Our Solutions**  
Get your quote today!

**1-800-264-9900**  
[Contact Here](#)