



MSNST LOW-PROFILE LOAD CELL

2,000 – 5,000 LBS MODEL



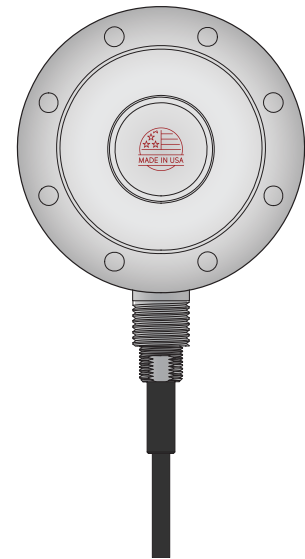
2K-5K Low-Profile Shear-Web Description:

Measurement Specialists' low-profile shear-web design allows for compression and tension-oriented measurement in high capacities while maintaining a minimal size, making it a highly versatile load cell. Utilized in weighing hoppers, tanks, and silos commonly found in steel mills and agricultural centers.

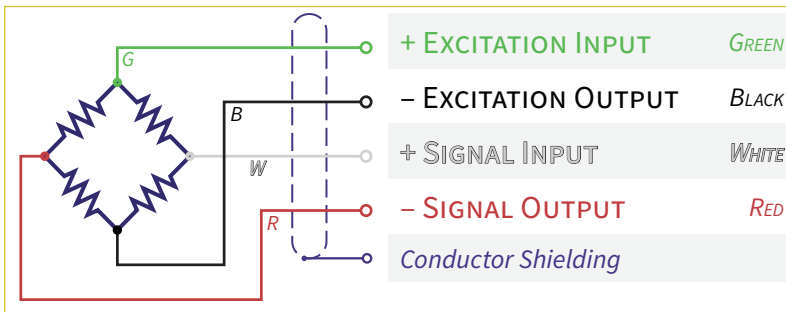
SPECIFICATIONS

Capacity	2,000 – 5,000 U.S. LBS	
Maximum Overload	Safe: 150%	Ultimate: 300%
Construction	17-4PH Stainless Steel + Heavy-Duty Polyurethane Cable 25' 4-Conductor Shielded	
Temperature Range	10°F – 115°F	
Excitation Voltage	10V – 15V AC/DC	
Output Configurations	2mV/V ±0.1%	
Bridge Resistance	350Ω Input & Output, ±1% ohms	
Insulation Resistance	5000 MΩ min	
Accuracy & Precision	Nonlinearity: 0.04% Full-Scale Output	Repeatability: 0.01% Full-Scale Output

UNIT No. 1500378



WIRING SCHEMATIC



All calibrations conducted with traceability to NIST standards.



Please note that specifications or results may vary as we at Measurement Specialists can customize units per request, as needed.

160 West Park Loop Northwest, Huntsville, Alabama 35806-1744

Toll-Free: (800) 264-9990
www.msnst.com

**MEASUREMENT
SPECIALISTS**
NATIONAL SCALE TECHNOLOGY

Page 1 of 2

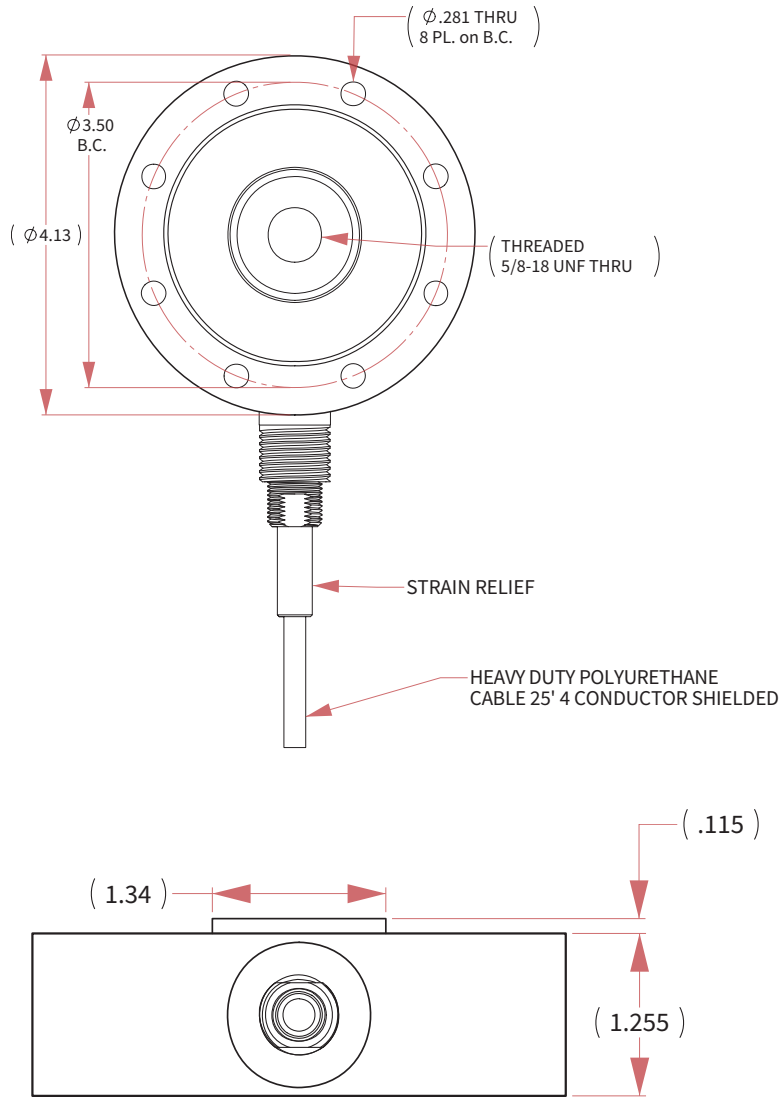


MSNST LOW-PROFILE LOAD CELL

2,000 – 5,000 LBS MODEL



1500378 | DIMENSIONS



STANDARD	PART #
2,000 LBS	1500378-2
3,000 LBS	1500378-3
4,000 LBS	1500378-4
5,000 LBS	1500378-5

Already have one of these or a compatible cell?

Measurement Specialists fixes weighing devices from any manufacturer!

Along with replacement of all internal electronic components & other parts as needed, MSNST provides a full-scale calibration and 1-year warranty.

All repairs and calibrations completed within an average of 15-20 business days.

160 West Park Loop Northwest, Huntsville, Alabama 35806-1744

Toll-Free: (800) 264-9990
www.msnst.com

**MEASUREMENT
SPECIALISTS**
NATIONAL SCALE TECHNOLOGY

Page 2 of 2



MSNST LOW-PROFILE LOAD CELL

50,000 LBS MODEL



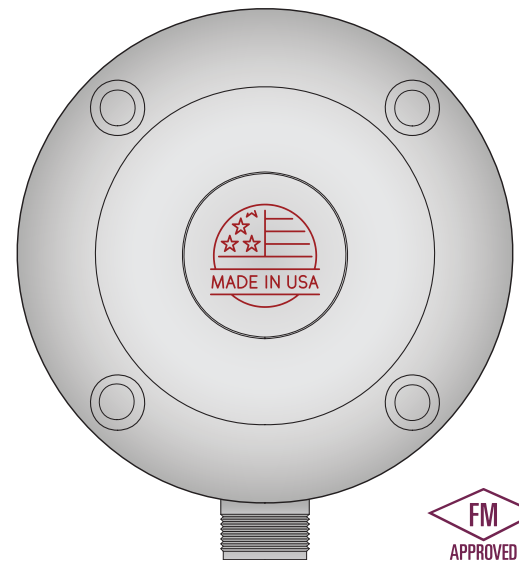
50K Low-Profile Shear-Web Description:

Measurement Specialists' low-profile shear-web design allows for compression and tension-oriented measurement in high capacities while maintaining a minimal size, making it a highly versatile load cell. Utilized in weighing hoppers, tanks, and silos commonly found in steel mills and agricultural centers.

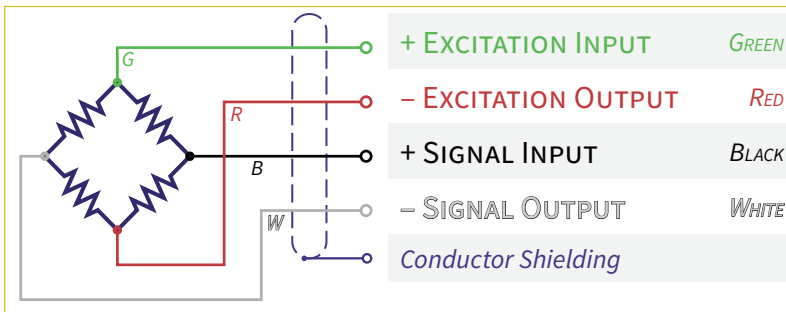
SPECIFICATIONS

Capacity	50,000 <i>U.S. LBS</i>	
Maximum Overload	Safe: 150%	Ultimate: 300%
Construction	17-4PH Stainless Steel + Heavy-Duty Polyurethane Cable <i>25' 4-Conductor Shielded</i>	
Temperature Range	10°F — 115°F	
Excitation Voltage	10V — 15V <i>AC / DC</i>	
Output Configurations	3.5mV / V $\pm 0.1\%$	
Bridge Resistance	350Ω <i>Input & Output, $\pm 1\%$ ohms</i>	
Insulation Resistance	5000 MΩ <i>min</i>	
Accuracy & Precision	Nonlinearity: 0.05% <i>Full-Scale Output</i>	Repeatability: 0.03% <i>Full-Scale Output</i>
		Hysteresis: 0.20%

UNIT No. 1500850



WIRING SCHEMATIC



Span Drift: 0.005% Zero Drift: 0.005%
Full-Scale Output Full-Scale Output

All calibrations conducted with traceability to NIST standards.

Please note that specifications or results may vary as we at Measurement Specialists can customize units per request, as needed.

160 West Park Loop Northwest, Huntsville, Alabama 35806-1744

Toll-Free: (800) 264-9990
www.msnst.com

MEASUREMENT SPECIALISTS
NATIONAL SCALE TECHNOLOGY

Page 1 of 2

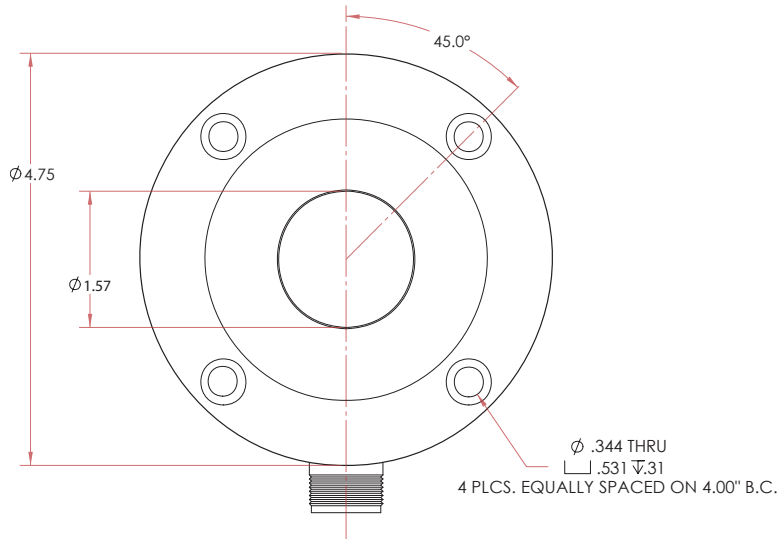


MSNST LOW-PROFILE LOAD CELL

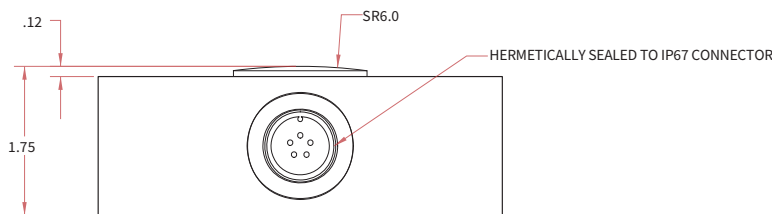
50,000 LBS MODEL



1500850 | DIMENSIONS



STANDARD	PART #
50,000 LBS	1500850-50



Already have one of these or a compatible cell?

Measurement Specialists fixes weighing devices from any manufacturer!

Along with replacement of all internal electronic components & other parts as needed, MSNST provides a full-scale calibration and 1-year warranty.

All repairs and calibrations completed within an average of 15-20 business days.

160 West Park Loop Northwest, Huntsville, Alabama 35806-1744

Toll-Free: (800) 264-9990
www.msnst.com

**MEASUREMENT
SPECIALISTS**
NATIONAL SCALE TECHNOLOGY

Page 2 of 2



MSNST LOW-PROFILE LOAD CELL

2,000 – 5,000 LBS MODEL



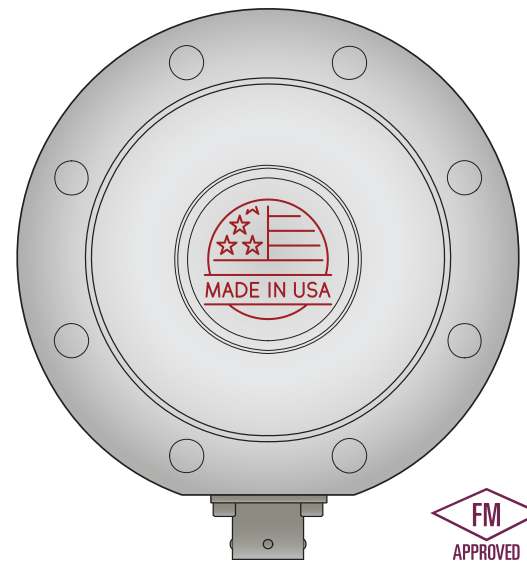
2K-5K Low-Profile Shear-Web Description:

Measurement Specialists' low-profile shear-web design allows for compression and tension-oriented measurement in high capacities while maintaining a minimal size, making it a highly versatile load cell. Utilized in weighing hoppers, tanks, and silos commonly found in steel mills and agricultural centers.

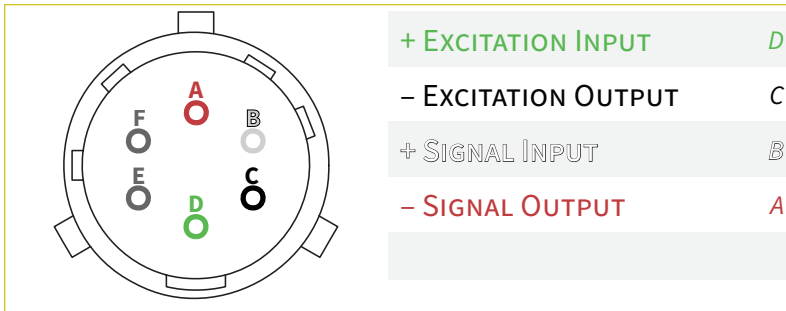
SPECIFICATIONS

Capacities	2,000 – 5,000 U.S. LBS	
Maximum Overload	Safe: 150%	Ultimate: 300%
Construction	17-4PH Stainless Steel + 6-Pin Connector <i>MIL-SPEC</i>	
Temperature Range	10°F – 115°F	
Excitation Voltage	10V – 15V AC / DC	
Output Configurations	2mV / V ±0.1%	
Bridge Resistance	350Ω Input & Output, ±1% ohms	
Insulation Resistance	5000 MΩ min	
Accuracy & Precision	Nonlinearity: 0.04% <i>Full-Scale Output</i>	Repeatability: 0.01% <i>Full-Scale Output</i>

UNIT No. 1500876



WIRING SCHEMATIC



All calibrations conducted with traceability to NIST standards.



Please note that specifications or results may vary as we at Measurement Specialists can customize units per request, as needed.

160 West Park Loop Northwest, Huntsville, Alabama 35806-1744

Toll-Free: (800) 264-9990
www.msnst.com

**MEASUREMENT
SPECIALISTS**
NATIONAL SCALE TECHNOLOGY

Page 1 of 2

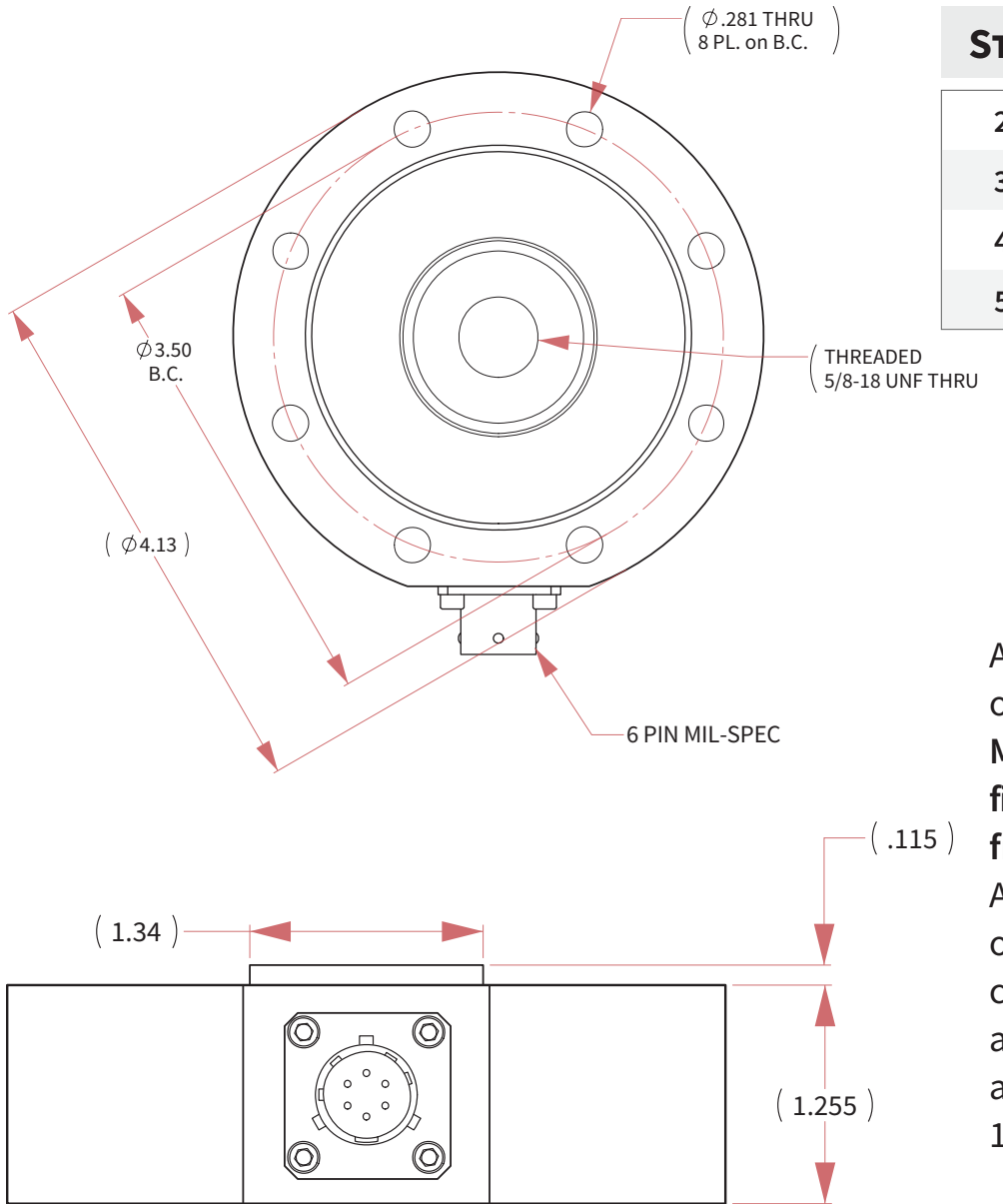


MSNST LOW-PROFILE LOAD CELL

2,000 – 5,000 LBS MODEL



1500876 | DIMENSIONS



STANDARD	PART #
2,000 LBS	1500876-2
3,000 LBS	1500876-3
4,000 LBS	1500876-4
5,000 LBS	1500876-5

Already have one of these or a compatible cell? **Measurement Specialists** fixes weighing devices from any manufacturer! Along with replacement of all internal electronic components & other parts as needed, MSNST provides a full-scale calibration and 1-year warranty.

All repairs and calibrations completed within an average of 15-20 business days.

160 West Park Loop Northwest, Huntsville, Alabama 35806-1744

Toll-Free: (800) 264-9990
www.msnst.com

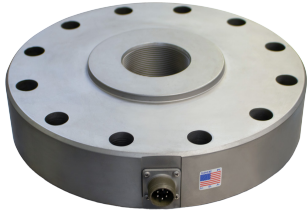
**MEASUREMENT
SPECIALISTS**
NATIONAL SCALE TECHNOLOGY

Page 2 of 2



MSNST LOW-PROFILE LOAD CELL

200,000 LBS MODEL



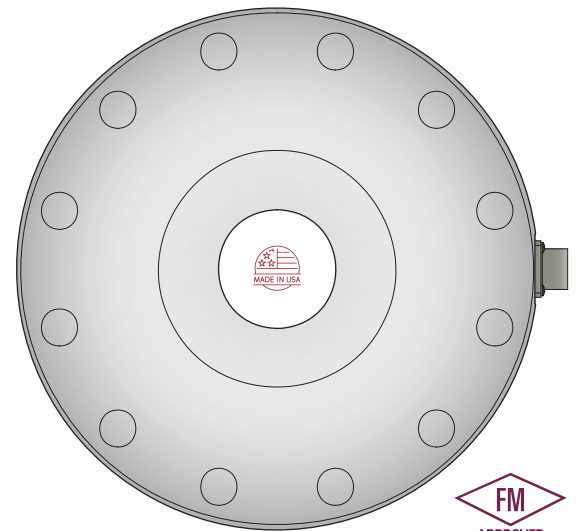
200K Low-Profile Shear-Web Description:

Measurement Specialists' low-profile shear-web design allows for compression and tension-oriented measurement in high capacities while maintaining a minimal size, making it a highly versatile load cell. Utilized in weighing hoppers, tanks, and silos commonly found in steel mills and agricultural centers.

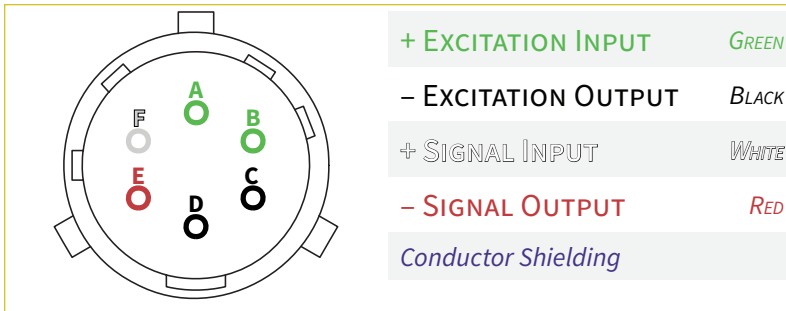
SPECIFICATIONS

Capacity	200,000 U.S. LBS	
Maximum Overload	Safe: 150%	Ultimate: 300%
Construction	17-4PH Stainless Steel + 6-Pin Connector <i>MIL-SPEC</i>	
Temperature Range	10°F — 110°F	
Excitation Voltage	10V — 15V AC/DC	
Output Configurations	3mV/V ±0.1%	
Bridge Resistance	350Ω Input & Output, ±1% ohms	
Insulation Resistance	5000 MΩ min	
Accuracy & Precision	Nonlinearity: 0.10% <i>Full-Scale Output</i>	Repeatability: 0.03% <i>Full-Scale Output</i>

UNIT No. 1500902



WIRING SCHEMATIC



All calibrations conducted with traceability to NIST standards.



Please note that specifications or results may vary as we at Measurement Specialists can customize units per request, as needed.

160 West Park Loop Northwest, Huntsville, Alabama 35806-1744

Toll-Free: (800) 264-9990
www.msnst.com

**MEASUREMENT
SPECIALISTS**
NATIONAL SCALE TECHNOLOGY

Page 1 of 2

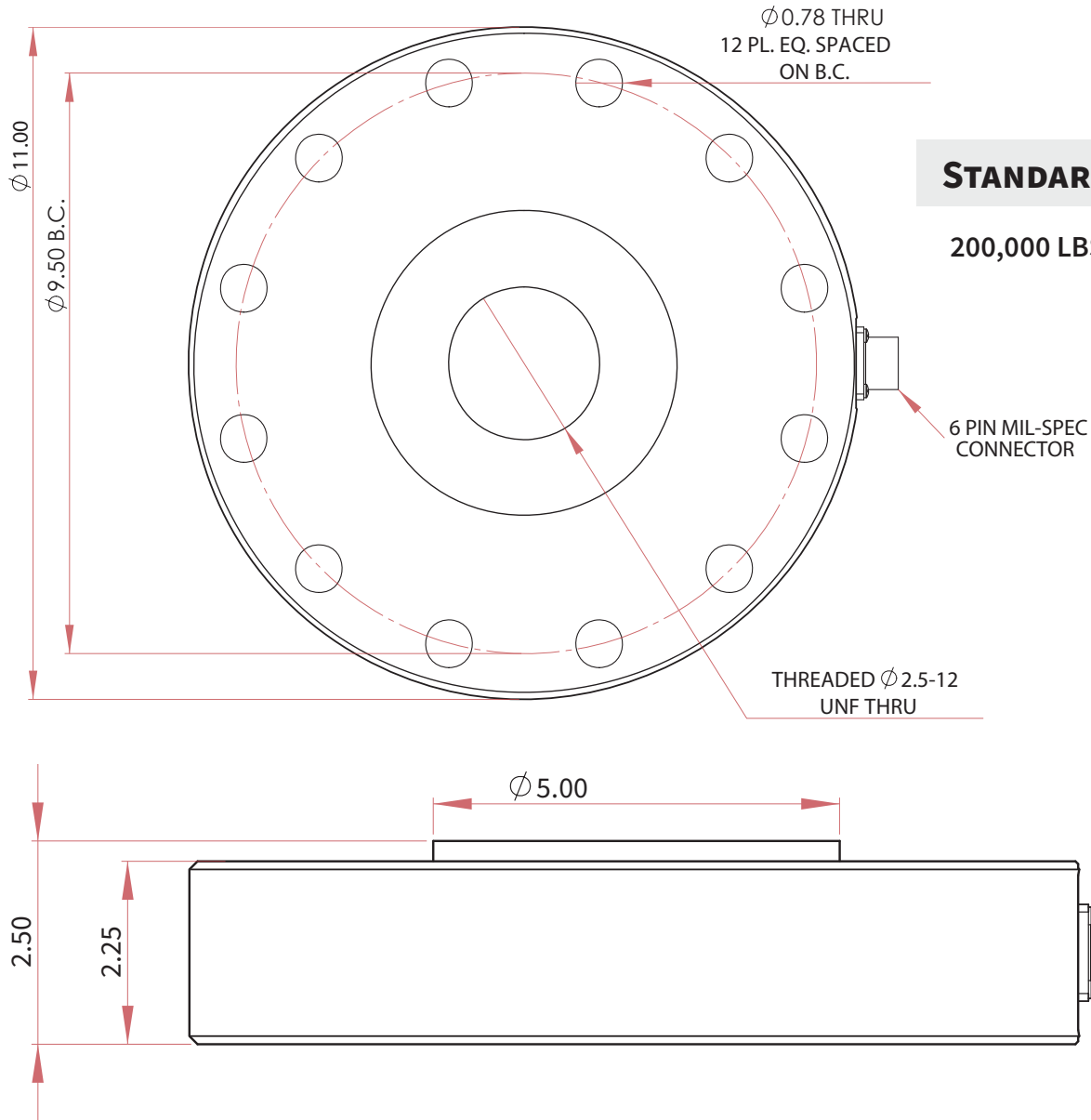


MSNST CANISTER LOAD CELL

200,000 LBS MODEL



1500902 | DIMENSIONS



STANDARD	PART #
200,000 LBS	1500902-200

Already have one of these or a compatible cell?
Measurement Specialists fixes weighing devices from any manufacturer!
Along with replacement of all internal electronic components & other parts as needed, MSNST provides a full-scale calibration and 1-year warranty.

All repairs and calibrations completed within an average of 15-20 business days.

160 West Park Loop Northwest, Huntsville, Alabama 35806-1744

Toll-Free: (800) 264-9990
www.msnst.com

**MEASUREMENT
SPECIALISTS**
NATIONAL SCALE TECHNOLOGY

Page 2 of 2



MSNST LOW-PROFILE LOAD CELL

55,000 LBS MODEL



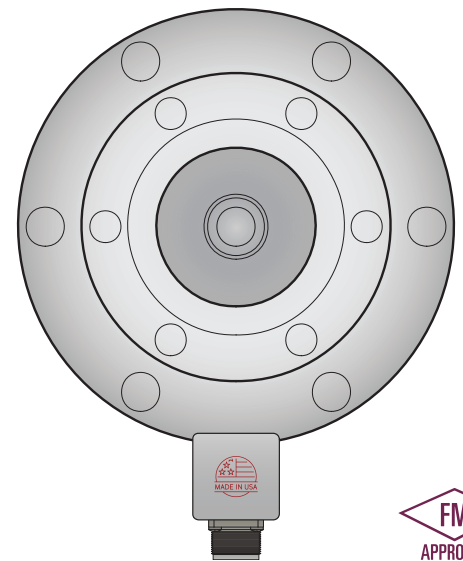
55K Low-Profile Shear-Web Description:

Measurement Specialists' low-profile shear-web design allows for compression and tension-oriented measurement in high capacities while maintaining a minimal size, making it a highly versatile load cell. Utilized in weighing hoppers, tanks, and silos commonly found in steel mills and agricultural centers.

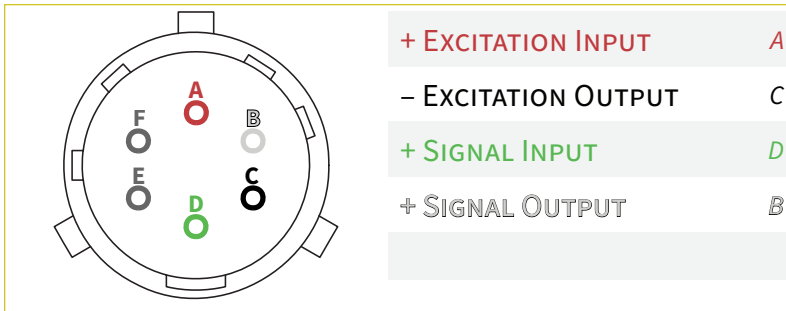
SPECIFICATIONS

Capacity	55,000 U.S. LBS	
Maximum Overload	Safe: 150%	Ultimate: 500%
Construction	17-4PH Stainless Steel + 6-Pin Connector <i>MIL-SPEC</i>	
Temperature Range	10°F — 110°F	
Excitation Voltage	10V — 15V AC/DC	
Output Configurations	0.9mV / V ±0.1%	
Bridge Resistance	700Ω Input & Output, ±1% ohms	
Insulation Resistance	5000 MΩ min	
Accuracy & Precision	Nonlinearity: 0.25% <i>Full-Scale Output</i>	Repeatability: 0.10% <i>Full-Scale Output</i>

UNIT No. 1501158



WIRING SCHEMATIC



All calibrations conducted with traceability to NIST standards.



Please note that specifications or results may vary as we at Measurement Specialists can customize units per request, as needed.

160 West Park Loop Northwest, Huntsville, Alabama 35806-1744

Toll-Free: (800) 264-9990
www.msnst.com

**MEASUREMENT
SPECIALISTS**
NATIONAL SCALE TECHNOLOGY

Page 1 of 2

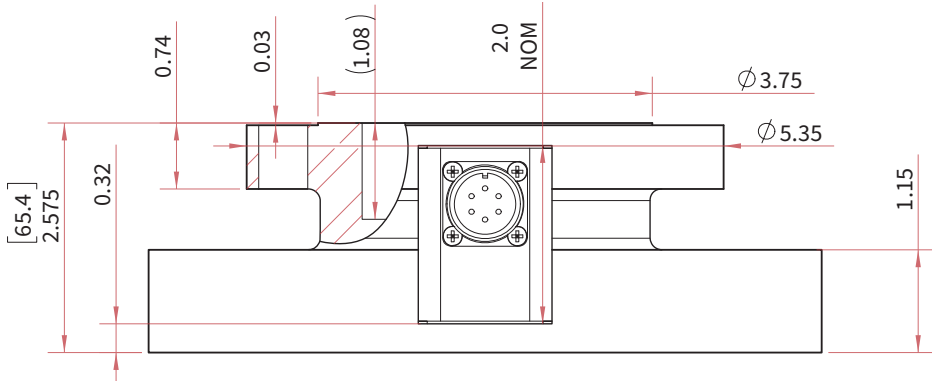
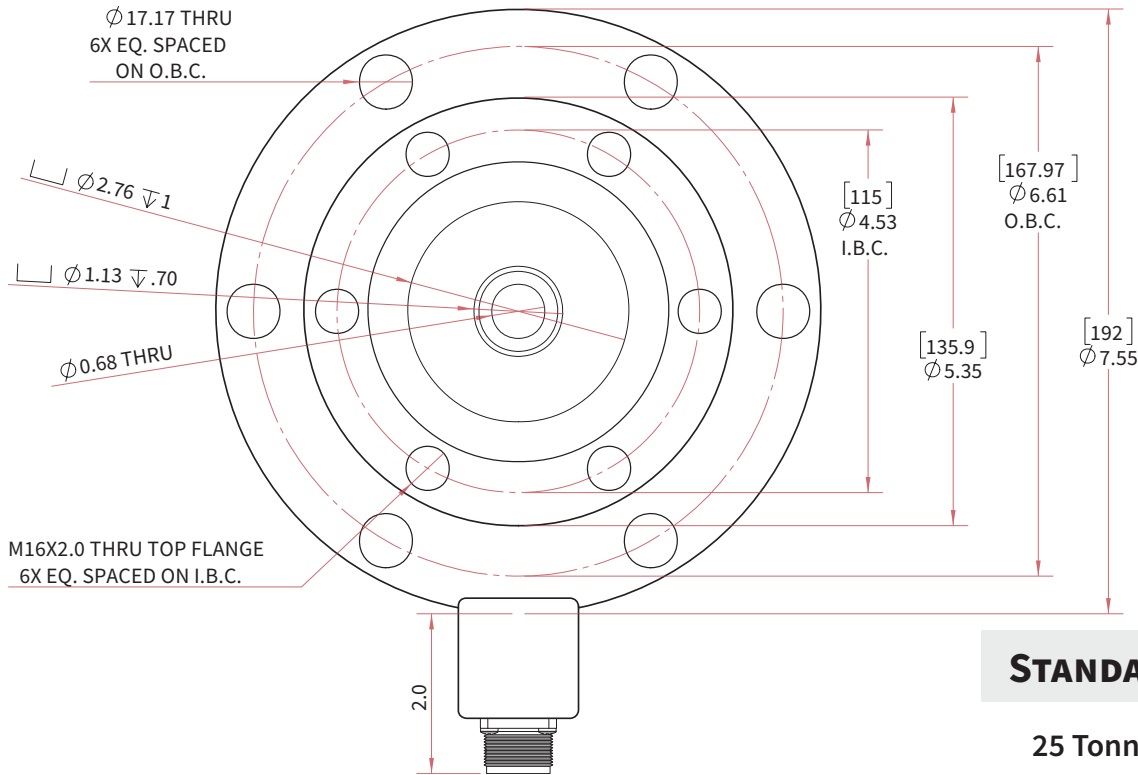


MSNST CANISTER LOAD CELL

55,000 LBS MODEL



1501158 | DIMENSIONS



STANDARD	PART #
25 Tonnes	1501158

Already have one of these or a compatible cell?
Measurement Specialists fixes weighing devices from any manufacturer!
 Along with replacement of all internal electronic components & other parts as needed, MSNST provides a full-scale calibration and 1-year warranty.

All repairs and calibrations completed within an average of 15-20 business days.

160 West Park Loop Northwest, Huntsville, Alabama 35806-1744

Toll-Free: (800) 264-9990
 www.msnst.com

**MEASUREMENT
 SPECIALISTS**
 NATIONAL SCALE TECHNOLOGY

Page 2 of 2