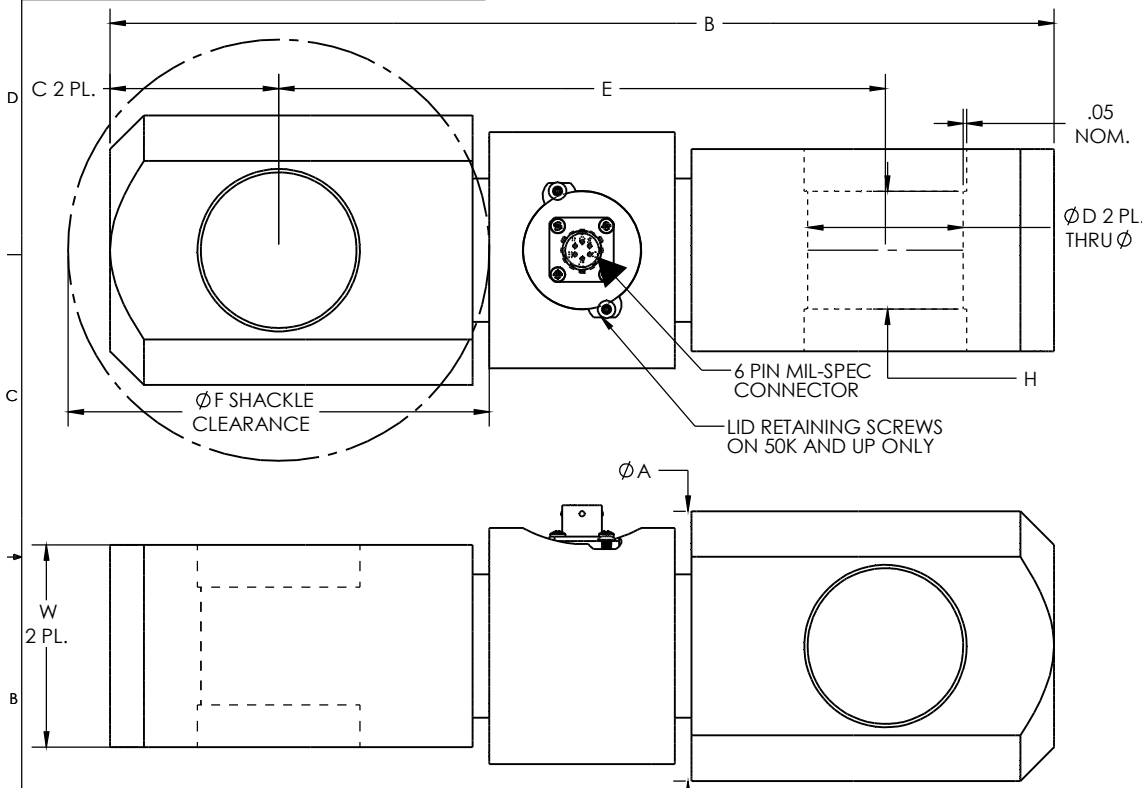


THE INFORMATION CONTAINED IN THIS DRAWING IS THE SOLE PROPERTY OF NATIONAL SCALE. ANY REPRODUCTION IN PART OR WHOLE WITHOUT THE WRITTEN PERMISSION OF NATIONAL SCALE IS PROHIBITED.

REVISIONS			
REV.	DESCRIPTION	DATE	APPROVED
A	ADDED NOTE FOR LID RETAINING SCREWS	9/3/15	BSA



CAPACITY: 5K TO 500K LB\*\*  
 CONSTRUCTION: STAINLESS STEEL  
 EXC. VOLTAGE: 10-15 VDC or VAC  
 OUTPUT: 3 mV/V ± 0.1%  
 TEMPERATURE RANGE: 10 to 120 °F  
 BRIDGE RESISTANCE: 350 OHMS ± 1%  
 INSULATION RESISTANCE: 5000 MEGOHMS MIN.  
 ZERO BALANCE: ± 0.1% F.S.  
 LINEARITY: ± 0.05% F.S.  
 REPEATABILITY: ± 0.03% F.S.  
 MAX. LOAD SAFE: 150% OF RATED CAP.  
 MAX. LOAD ULTIMATE: 300% OF RATED CAP.\*

NOTES:  
 \* 200% ABOVE 200,000 LB CAPACITY  
 \*\* HIGHER CAPACITIES ARE AVAILABLE UPON REQUEST

CAPACITY	NOM. SIZE SHACKLE	Ø A	B	C	Ø D	E	F	W	H	RECOMMENDED CROSBY P/N:
5-10K LB	6½† (7/8")	2.00	6.50	1.00	1.05	4.500	2.38	1.37	0.75	1019533
25K LB	13.5† (1 3/8")	2.75	8.00	1.38	1.55	5.250	2.88	2.00	1.00	1019613
50-75K LB	35† (2")	4.00	14.0	2.50	2.31	9.00	5.80	3.00	1.75	1019677
100-150K LB	55† (2½")	5.00	16.0	2.88	2.88	10.25	6.25	4.00	2.00	1019695
200K LB	85† (3")	6.00	18.0	3.25	3.38	11.50	6.50	4.75	2.38	1019711
250K LB	120† (3½")	6.50	20.0	3.75	3.88	12.50	7.50	5.00	2.75	1019739
300-500K LB	150† (4")	7.50	24.0	4.50	4.31	15.00	9.50	5.40	3.00	1019757

NOTE: - C IS CAPACITY IN 1,000 LB INCREMENTS I.E.: 1200523-200 IS 200,000 LB

LOAD CELL FUNCTION	CONNECTOR
+ EXC	D
- EXC	C
+ SIG	B
- SIG	A

UNLESS OTHERWISE SPECIFIED DIMENSIONS ARE IN INCHES TOLERANCES ARE: FRACTIONS DECIMALS ANGLES		CAD GENERATED DRAWING. DO NOT MANUALLY UPDATE		NATIONAL SCALE TECHNOLOGY 690 Discovery Dr. Huntsville Al. 35806	
STOCK SIZE		APPROVALS		DATE	
MATERIAL		DRAWN BY		7/8/10	
FINISH		CHECKED BY		7/8/10	
MFG ENG		OTHER		DATE	
STOCK P/N:		SIZE		DWG. NO.	
NEXT ASY		B		1200523-C-*	
APPLICATION		SCALE		1:1.75	
DO NOT SCALE DRAWING		MFG. FILE		1200523	
				SW MODEL FILE: 1200523	
				SHEET 1 OF 10	